



University
College
Jersey

the
best
way to
predict
the
future
is to
create
it.

Degree and Diploma Courses
2019/2020

Jersey's Leading Provider
of Higher Education

www.highlands.ac.uk



Proudly sponsored by



STUDY LOCAL. GET GLOBAL.

Get a University of London
law degree in Jersey



For more information, contact:

W: www.lawinstitute.ac.je | T: 01534 826060

INSTITUTE OF LAW,
University College Jersey, Top floor, Turner Building,
Highlands Lane, St Saviour, JE1 1HL

Follow us on



InstituteofLawJsy



@InstofLawJersey



Institute of Law



Welcome from the Principal

Welcome to the 2019/20 guide to our University College Jersey courses.

This year sees some exciting new developments for higher education at Highlands College.

Our new partnership with the University of Sussex enables us to bring a world class training programme for Social Workers to Jersey with the introduction of a three year BA (Hons) in Social Work. We are also extending our provision with Pearson/BTEC in 2019/20 with BTEC Higher Nationals in Computing and Sport .

At UCJ we offer all islanders the opportunity to study at degree level to improve their life chances and to open doors to better paid and more rewarding jobs and careers.

Our courses are work-related and are associated with Jersey's local economy and employment opportunities.

A handwritten signature in black ink, likely belonging to Steve Lewis.

Steve Lewis
MA, MEd., BEd (Hons), Cert. Ed., Cert. HE., MloD
Principal





A warm
welcome
from our sponsor MasonBreese
Jimmy Kelly

As an organisation we are committed to supporting the learning and development of our people, therefore teaming up with the island's largest provider of higher education is a natural fit. Through our partnership with University College Jersey (UCJ) we help support students to transition into the world of commerce and provide multiple opportunities for students to learn from our experiences.

We also provide career pathways for graduate-calibre students to join our vibrant team. The MasonBreese Change Academy provides a two-year programme aimed at graduates comprising of online learning, self-study, work placement, industry recognised certifications (BCS, PRINCE2 and Agile) plus it is Chartered Management Institute (CMI) recognised through Highlands College.

Our area of expertise is supporting organisations through change and digital transformation by providing high calibre Business Analysts and Project Managers, plus a range of digital services including data analytics and Robotic Process Automation (RPA). In 2018, we also launched

a new service, MB People, which provides leadership, management and organisational development solutions to our clients. We offer our people the opportunity to work across a variety of industry sectors including international finance, telecommunications, utilities, retail and public sector. Our clients are based across the Channel Islands, United Kingdom, Europe and the Middle East.

MasonBreese is proud to be the lead sponsor of UCJ.

Jimmy Kelly
Director of Mason Breese

contact us

T 01534 608526
E ucadmin@highlands.ac.uk
www.highlands.ac.uk

Study a degree at University College Jersey



200+
students

are taking higher level qualifications



70% of students achieved

a 1st class or upper 2nd class honours degree in 2018 and **54%** of students achieved a **Merit** or **Distinction** Foundation Degree



95% of students graduating

from UCJ have a firm job offer before graduating



Staff to student ratio at UCJ is 1:7

better than any UK university for similar courses



academic partners

achieve your degree in partnership with the Universities of London South Bank, Plymouth and Sussex or receive the international recognition of a BTEC Higher National from Pearson



Earn up to £6000

studying Business, Computing and Finance at UCJ can earn you money during your work placement



full access

to all of Highlands facilities and support services



Work & Learn

work placement during your course gives you access to professionals in industry to support the development of your employability skills



Academic partners	7
Progression routes	10
Future careers	11
Support	12
Student life	15
How to apply	18
How to fund your course	20
Civil Engineering	22
Access to Higher Education	24
Business & Management	26
Childhood Studies	32
Computing	36
Construction	40
Diploma in Art & Design (UAL)	48
Psychology and Criminology	50
Social Sciences	54
Social Work	58
Sport	60
Human Resource Management	62

make it
happen

Degrees and diplomas explained

HND/HNC [BTEC Higher Nationals – licensed from Pearson, awarded direct or by LSBU]

With a qualification that meets employer needs you will be equipped with both academic and practical skills, ensuring you leave with the experience required by business and industry and with the flexibility to go straight into employment or top-up to a full Bachelor's [BA/BSc Hons] degree with an additional year of full-time study or two years of part-time study.

FdA/FdSc [Foundation Degrees – awarded by Plymouth University]

A foundation degree is a Level 5 stand alone qualification, similar to Higher Nationals, usually delivered in 2 years full-time or 4 years part-time. A foundation certificate at level 4 can be awarded after 1 year full-time study or 2 years part-time study. All our foundation degrees combine academic study with work placements. A foundation degree can be topped up to a full Bachelor's [BA/BSc Hons] degree with an additional year of full-time study or two years of part-time study.

BSc / BA [Top-up (Hons) Degrees – awarded by Plymouth University & LSBU]

A "top-up" honours degree is a Level 6 qualification that develops higher-level skills and understanding to work towards a career in management, research and academic pathways. They are designed as the progression route for students who have already achieved an HND or a foundation degree in a relevant or similar subject.

BA [Honours Degree – awarded by the University of Sussex]

This is a full three year programme awarded at level 6. The level indicates the requirement of the profession associated with the degree which, in our case is Social Work. For this reason, the entry requirements for the BA [Hons] is higher than for Higher Nationals and Foundation Degrees.

MSc [Master's Degree]

A Master's degree is a Level 7 qualification for those who have completed a full degree. It is an intense period of study, normally lasting 1 year full-time or 2 years part-time and includes both taught and research components (based on a thesis). Master's degrees are for those interested in an academic career or higher level employment.

Higher and Degree Apprenticeships

UCJ offers higher or degree apprenticeships in partnership with the Skills Jersey Trackers Apprenticeship programme. It enables UCJ qualifications to be studied whilst working. Apprentices are expected to be working approximately 30 hrs a week, and attend college on a day-release, evening or block-release basis. Higher and Degree apprentices are supported in their employment by an experienced mentor from Skills Jersey's Trackers programme. Applicants considering this route to higher level study should contact Trackers directly.

Tel: 01534 449180

email: trackers@gov.je

academic partners



Pearson

Pearson is the UK's largest awarding body and they are regulated by Ofqual (England), SQA Accreditation (Scotland), CCEA Accreditation (Northern Ireland) and Qualifications Wales (Wales). They offer academic and vocational qualifications that are globally recognised and benchmarked.

BTEC is the world's most successful and best-loved applied learning brand, and it has been engaging students in practical, interpersonal and thinking skills for more than 30 years. BTEC Higher Nationals are professional/ technical higher education qualifications, recognised as equivalent to the first two years of an honours degree. Designed for students who want to gain both recognition through higher education level study - and want to progress to the final year of an honours degree, and those who want an industry recognised qualification providing the skills and experience to support their progression in employment. BTEC Higher Nationals are co-designed with industry, employers and professional bodies. BTEC Higher National qualifications are therefore widely recognised by industry and higher education as the principal vocational qualification at Levels 4 and 5, equivalent to the first two years of an honours degree.



London South Bank University

London South Bank University (LSBU) – originally the Borough Polytechnic Institute – laid down roots in south London in 1892 and has been improving the lives of students, businesses and the local community ever since.

LSBU was awarded University of the Year for Graduate Employment and prospects by The Times and The Sunday Times Good University Guide 2018. This follows on from their award as University of the Year for Graduate Employment and prospects by the Times Higher Education Supplement in 2016. LSBU has a silver rating under the UK government's Teaching and Excellence Framework (TEF) and is in The Guardian Newspaper's top 100 universities.

UCJ at Highlands College works with the School of Engineering and the School of The Built Environment and Architecture, which together are the top modern university in London for world-leading and internationally excellent research in General Engineering. LSBU has the largest Building School in the UK and trains 60% of Building Services engineers. LSBU has been educating Professional Engineers for over 100 years and was the first university to admit women to an engineering course.



Plymouth University

Founded in 1862 as a School of Navigation, and among the highest-ranked modern higher education institutions in the world, the University of Plymouth is now the UK's 15th largest university. A twice winner of the Queen's Anniversary Prize for Higher and Further Education, and with a world-class research pedigree and a reputation for innovation in its approach to teaching and learning, the University has consistently built upon its roots.

With 23,000 enrolled students and a further 13,000 studying for a University of Plymouth award at institutions in the UK and overseas, such as UCJ at Highlands College, Plymouth has become one of the largest and most influential universities in the UK, with research and teaching that positively impacts cultures and economies across the globe.

The University of Plymouth is placed second in the UK and 86th globally in the 2018 Times Higher Education Young University Rankings. Plymouth was the first university to be awarded the Social Enterprise Mark and is fourth in the 2018 Whatuni Student Choice Awards for student satisfaction in higher education. Plymouth has a silver rating under the UK government's Teaching and Excellence Framework (TEF).

The University of Plymouth has a long established strategy of working in partnership with Further Education Colleges in the South West of England and has been working with Highlands college since the establishment of a Certificate of Higher Education in Social Sciences in 1992.



University of Sussex

The University of Sussex is a leading higher education and research institution near Brighton, in the south of England. Sussex was the first of the new wave of UK universities founded in the 1960s, receiving its Royal Charter in 1961. Sussex is a leading research university, as reflected in the 2014 Research Excellence Framework (REF). Over 75% of research activity at Sussex is categorised as world leading [4*] or internationally excellent [3*] in terms of originality, significance and rigour. Overall, the University was placed 36th [of multi-disciplinary institutions] by grade point average [GPA].

The University of Sussex is a high ranking university: 20th in the UK: The Times Higher Education Table of Tables 2018; 25th in the UK: The Complete University Guide [CUG] 2019; 26th in the UK: The Times Higher Education World University Rankings 2018–19.

The University of Sussex is the newest partnership with UCJ and will be co-teaching the new BA in Social Work. Sussex is rated 15th in the UK for Social Work (The Guardian University Guide 2019) and 100% of their Department of Social Work and Social Care graduates were in work or further study six months after graduating (HESA EPI, Destinations of Leavers from Higher Education 2016).

Strategic. Innovative. Engaged.

“Working at MasonBreese as a Change Academy Business Analyst allows me to put the theory I learnt at Highlands College into practice”

- Rob Miller

MASONBREESSE
Shift thinking. Drive change.



Build your career at MasonBreese

Entering the employment sector after university can be daunting and confusing. The MasonBreese Change Academies are the ideal way to continue your professional development whilst earning a competitive salary.

You will become part of a dynamic, vibrant team with access to a diverse range of businesses where you will learn how to become an effective Business Analyst or Data Analyst. Both the Change Academy and Data Academy offer the perfect opportunity to develop your skills whilst learning within a professional environment.

With the guidance of a personal mentor throughout the programmes you will be fully supported during your two years and given all of the tools required to excel in your chosen career within the Change Management or Data Management industry.

APPLY TODAY

01534 761461
recruitment@masonbreese.com
www.masonbreese.com
MasonBreese, 24 Hill Street,
St Helier, JE2 4UA

FOLLOW US

Facebook
LinkedIn
Instagram
Twitter

Proud
sponsors
of:

h University
College Jersey

Progression routes

Level 3	Level 4/5	Level 6
National Diploma in IT or Digital Games or 2 A levels (including Computer Science or ICT)	HNC/HND in Computing [New for 2019: subject to validation]	BSc (Hons) in Computing [Note: in development for 2021]
National Diploma in Sport or 2 A levels, (including Sport or a Science subject)	HNC/HND in Sport [New for 2019: subject to validation]	BSc (Hons) in Applied Sport and Exercise Studies [Note: in development for 2021]
National Diploma in Business or 2 A levels, (including Business) or Access to HE Diploma	FdA in Business & Management	BA (Hons) in Business & Management
National Diploma in Health & Social Care or Uniform Public Services or 2 A levels (including Psychology) or Access to HE Diploma	FdSc in Psychology with Criminology	BSc (Hons) in Social Sciences [Note: this may change to Psychology with Criminology for 2021]
CACHE Diploma in Childcare and Education (Level 3) or 2 A levels (including Psychology or Biology) or Access to HE Diploma	FdA in Childhood Studies	BA (Hons) in Childhood Studies
National Diploma in Construction or Level 3 Apprenticeship in Building Services or Trades or 2 A levels (including Design Technology or Engineering)	HNC in Construction	BSc (Hons) in Construction Management
Level 3 Apprenticeship in Building Services or 2 A levels (including Maths or Physics or Engineering)	HNC in Civil Engineering	BEng in Engineering [Note: in development for 2020]
National Extended Diploma in Health & Social Care or 3 A levels or Access to HE Diploma	BA (Hons) in Social Work [New for 2019: subject to validation]	

Key:	Degrees awarded by Plymouth University	HNC/HNDs awarded directly by Pearson/BTEC	HNC/HNDs awarded by LSBU under licence from Pearson/BTEC
	Degrees awarded by London South Bank University	Degree awarded by University of Sussex	

future career opportunities

UCJ has some of the highest rates of graduate employment in the UK. This is due to the strong partnerships we have with local industry professionals who offer work placements to our students as part of their degree programme. Focusing on linking theory based learning with practical application through work placements ensures students get a real understanding of how their degree will influence their chosen career path.

support

when you need it

**As a UCJ student
we want you to be
happy, supported
and achieve
academic success...
in that order!**



Matthew
Wellman

BSc (Hons) Social Sciences Graduate.
**External Relations Officer, Ministry of External
Relations, Jersey.**

I graduated in October 2017 with a First Class Honors degree in Social Sciences. Studying at UCJ meant the class sizes were notably smaller than that of UK universities and, as such, the teacher to student ratio was better, and seminars and discussions – as well as relationships with tutors – were more personal. I managed to continue with part-time employment alongside my studies; I finished my degree in a better financial position than if I had studied abroad.

Being in Jersey meant I could undertake significant work experience within local government and industries. I spent a considerable period of my three years working for the Ministry of External Relations. I managed to secure employment after my studies, and I am currently working on the Brexit team.

When I left school I was unsure on exactly what I wished to study or the career I wished to pursue. The Social Science degree was varied and contemporary, and a number of the modules slotted perfectly into my interests. It allowed me to obtain a degree that did not necessarily restrict or confine me to one career path, and provided a great deal of flexibility – something I have already noticed since taking up employment.



Rafal
Wzorek

**FdSc IT for Business and BA (Hons) Business
& Management Graduate.**
Data academy analyst at MasonBreese.

While many start higher education straight from school, my journey started a lot later than average. Studying at UCJ allowed for this and it was an appealing option for several reasons; the courses are run locally, are more intimate due to the class sizes and are led by great academic staff.

As part of the FdSc, I undertook work placements which are a key element, as one can gain experience in roles and consider which you are most drawn to.

After obtaining my FdSc degree I went on to study for the BA in Business and Management, again with UCJ, and subsequently I secured the role of a business analyst with MasonBreese, which allows me to transpose my vision of excellence into the business environment and also supports my ongoing professional development, through its Academy training.

Welcome to UCJ

When you start university you will probably feel mixed emotions about leaving your previous educational establishments, working environments or returning to study after a long period of time. Starting university is a rite of passage but you are not expected to cope alone; there are numerous support systems in place to help you adjust to this transition. The adventure starts with Freshers' week, an ideal opportunity to find out more about groups and societies that are available to you as a means of meeting other people outside of your degree course.

If you find yourself not coping for some reason we have the Student Life team who can be accessed either via your personal tutor or independently through their main office in the Café Connect Lounge. The team are here to support you through your time at UCJ. They can offer support or advice in a one off capacity or for a longer period of time if necessary. We also have a student counsellor whose service is confidential and can be accessed to support you with those problems that life can intermittently throw at you. The most important factor for us is that students ask for help and don't allow challenging circumstances to be the reason for dropping out of their course.



The team are here to support you through your time at UCJ.

UCJ supports students with a variety of needs, including dyslexia and medical conditions such as epilepsy, diabetes and depression; some students have diagnoses of certain conditions when they start

university, whereas for others, assessment is part of the service we can advise on if dyslexia, dyspraxia or similar conditions are suspected. We can then use this information to ensure that your learning experience at UCJ is both supported and inclusive.



The most important factor for us is that students ask for help and don't allow challenging circumstances to be the reason for dropping out of their course.

From experience we appreciate that for many students the transition from school, where you have been supported by teachers, to studying independently, managing your time and commitment to studying can be challenging. This can be equally difficult for students returning to study after a break in education. In recognition of this you are allocated a personal tutor, who is your first point of contact should you find yourself struggling with your course. In addition, we also run workshops on study skills which can include note-taking, essay writing and time-management, and have drop-in sessions where you can access additional support.

As a UCJ student we want you to be happy, supported and achieve academic success... in that order!

THE UCJ experience



The Garenne Construction Group were delighted to sponsor the 2018 educational visit to the Battersea Power Station redevelopment as part of their new partnership with Highlands College. The trip, for students on the UCJ construction courses, was arranged through the Garenne partnership with Sir Robert McAlpine and offered the opportunity to see a large scale project not normally encountered by Jersey students.

Marc Burton, Chief Executive – Channel Island Operations, Garenne Construction Group

New York Trip

This biennial study trip is a highlight of the academic calendar at UCJ. The six day excursion takes in points of interest including the United Nations, UNESCO, Wall Street, the Federal Reserve Bank and the American Museum of Natural History. We also see a Broadway show, reach the top of the Empire State Building, enjoy a boat cruise to the Statue of Liberty and a basketball game at Madison Square Garden.

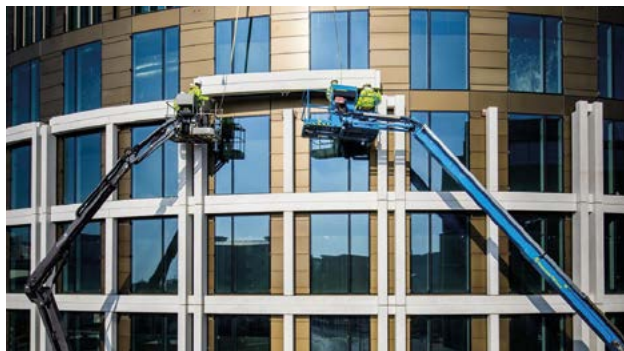
London Trip

First year students on the Construction Management degree can undertake a residential week at London South Bank University. Students receive tuition for their Research Project module and the trip offers the opportunity to engage with international students on campus. They also access specialist science and material laboratories, enjoy a social evening with LSBU staff and go on a specialised site visit in London.

In July 2018, educational partner Garenne Construction Group organised a visit to the redevelopment of the Battersea Power Station for UCJ Construction students. Students had the opportunity to meet the Project Director and Managers to hear about the challenges faced on the site that will eventually comprise of hundreds of apartments, a 167-room hotel, retail space, restaurants, leisure facilities and a roof garden.

Freshers' Week

Your student life at UCJ starts with Freshers' Week; an ideal opportunity to meet other students through fun and interesting activities, and is a chance for you to find out more about groups, societies and enrichment activities on offer during your time with us.



The Garenne Construction Group is a leading UK and Channel Islands business with a long tradition of investment in local construction. With over 1000 people working across Jersey, Guernsey and the UK we are always looking for talented individuals to join our team.

Are you interested in CAD Design, Construction, Marine/Civil Engineering, Plumbing or Electrical Engineering, Project Management, Quantity Surveying, Site Management and Facilities Management?

We are always looking for rising stars to work at AFM, Camerons, Geomarine and Granite Le Pelley.

You could have the opportunity to work with one of our award winning companies on high profile projects which include the Jersey International Finance Centre, Ann Court and Jersey Airport.

For more information on roles, please look at the careers section on **www.garenne.je** or on the careers pages of the following websites. Should you require any further information, please contact Louise Minier, louise.minier@garenne.je tel 726420.



www.amalgamatedfm.com



www.camerons.je



www.geomarine.je



www.granitelepelley.je



The annual graduation ceremony, attended by dignitaries from all of our partner universities, is the culmination of a student's higher education journey, and a fantastic opportunity to celebrate success with family and friends. Students process through the streets of St Helier in their robes and mortar boards, confirming their status as graduates of their awarding universities. Graduation is always warmly anticipated and fondly remembered.

how to apply to UCJ

All applications can be made by downloading a form at this link on our website:

www.highlands.ac.uk/application-forms/

Once you have submitted your application and have met the requirements, you will be invited for interview. You will be advised on any further preparation for entry requirements relating to your course. This may be in the form of a presentation or some written work.

All applications can be made by downloading a form on our website in the individual course listings. Your completed application should be sent to: ucadmin@highlands.ac.uk

If you are unsure of anything or have any questions, contact us directly:

T 01534 608526

E ucadmin@highlands.ac.uk

www.highlands.ac.uk

Student finance

If you are applying to study for a Diploma or Degree for the first time and you are a Jersey resident, you will be eligible to apply to Student Finance to have your Tuition Fees paid by the States of Jersey. Depending upon your family or personal income you may also be eligible for a maintenance grant and social security support.

Contact Student Finance

Open Monday to Friday 8:30am - 4:30pm

T 01534 449450

E studentfinance@gov.je

Or visit:

Careers Jersey

Philip Le Feuvre House
La Motte Street, St Helier
Jersey JE4 8PE

Students must be at least 18 on the 1st September 2019 in order to apply to any higher education courses at UCJ.



Cyber Security:
a rewarding
in-demand career.

Companies now have to defend against increasing numbers of cyber attacks every day and you could be part of the Logicalis team protecting them, keeping information safe and preventing cyber terrorists and other malicious individuals from accessing information that is stored online.

As a cyber security expert, you will work to protect databases, websites and devices connected to the internet from malicious hacks in a fast moving and exciting environment.

If you have a passion for technology and the interesting, challenging and meaningful work that a cyber security career provides, please call Paul Johnson on 288510 and find out how you could start your career in this exciting sector.

Jersey

Visit

www.je.logicalis.com

Call

+44 (0) 1534 288 510

Email

paul.johnson@je.logicalis.com



Studying at UCJ has allowed me to build a new career for myself and I am grateful to the tutors who helped me along the way.



How to fund your course

The States of Jersey provides financial help for Jersey students who want to study for their first undergraduate degree or other recognised higher education course at University College Jersey.

The amount you receive is means-tested and has two elements:

- Tuition fees: Up to £9,250 per year.
- Maintenance Grant: Up to £7,500 for a standard academic year. This helps to pay some of the living expenses, including accommodation, food and books.

You are entitled to apply for funding if you or your parents have lived in Jersey for long enough and meet the academic standard. The requirements vary depending on which course you want to study and whether you are:

- A dependent student – living with their parents and under 25 on 31 August of the year their course starts.
- An independent student – aged 25 and over or living financially independently for three years before the course starts or married and over 21.

Household income (total/gross)	Tuition fees	Maintenance	Total
£0 to £49,999.99	£9,250	£7,500	£16,750
£50,000 to £59,999.99	£9,250	£6,000	£15,250
£60,000 to £69,999.99	£9,250	£4,500	£13,750
£70,000 to £79,999.99	£9,250	£3,000	£12,250
£80,000 to £89,999.99	£9,250	£1,500	£10,750
£90,000 to £99,999.99	£9,250	£0	£9,250
£100,000 to £109,999.99	£9,250	£0	£9,250
£110,000 to £119,999.99	£8,325	£0	£8,325
£120,000 to £129,999.99	£7,400	£0	£7,400
£130,000 to £139,999.99	£6,475	£0	£6,475
£140,000 to £149,999.99	£5,550	£0	£5,550
£150,000 to £159,999.99	£4,625	£0	£4,625
£160,000 to £169,999.99	£3,700	£0	£3,700
£170,000 to £179,999.99	£2,775	£0	£2,775
£180,000 to £189,999.99	£1,850	£0	£1,850
£190,000 to £199,999.99	£925	£0	£925
£200,000 +	£0	£0	£0

Please note the Higher tax allowance is to be removed, and during the transitional period the amount of grant paid by the department will take account of this.

You need to apply for funding well before your course starts to be sure of receiving a grant for the beginning of term. You can apply any time from January 2019 for your course starting in September 2019. You must submit an application before 31 March 2019.

The initial application form is called HE1 and can be completed online at:

www.gov.je/Working/Careers/16To19YearOlds/EnteringHigherEducation/FinancingHigherEducationCourses/FundingDegreeProfessionalQualifications/Pages/ApplyFunding.aspx

Note: this information is correct at the time of going to press. Applicants should check the studentfinance@gov.je website for up to date information. All courses are subject to minimum enrolment.

Civil Engineering

LSBU Higher National Certificate
(licenced from Pearson/BTEC)

2 Years | Part Time

Leading to: BEng (Hons) Civil Engineering | 2 years | Part time

Why choose this course?

- Designed with the Civil Engineering sector in Jersey
- The first step on your career journey to becoming a civil engineer. Civil and structural engineers work on buildings of all kinds, transport and communications infrastructure, including bridges, roads, tunnels, canals and other large structures.
- Progress to a civil engineering degree
- Learn from industry specialists

What will I learn?

Civil engineering is a combination of many scientific specialisms, including mechanics, hydraulics, geotechnics (using knowledge of the earth's crust to solve construction problems), materials science and statistical analysis.

You'll learn to apply mathematics and scientific knowledge (particularly physics) to real-life situations and problems that arise from creating and maintaining structures, taking into account environmental, financial, legal and ethical considerations.

Course Fees

The fee for this course is £4,625 per year. There is an additional cost of £1,530, which covers all expenses for a residential at LSBU in London. You can apply to Student Finance to have your fees paid.

In partnership with



Year 1 (HNC)

- Construction Practice
- Materials and Geology
- Engineering Mechanics B

Year 2 (HNC)

- Engineering Surveying
- Mathematics B
- Structures and Construction Technology B

Higher Apprenticeship

This course was developed in partnership with Skills Jersey as a Higher Apprenticeship through Trackers. The Apprenticeship route provides mentoring in the workplace and the employer and employee apply through Trackers for this route. Students who are in employment can apply directly to UCJ to study this course part-time and apply to student finance to have their fees paid.

Please note: BEng (Hons) in Civil Engineering progression route is in development with LSBU for September 2021.

To progress to the BEng you must have been awarded an HNC with an average mark of 70% from four of the modules studied with a minimum of 60% in any one module.



Entry requirements

BTEC
National Diploma MPP

A level
Minimum EEE

Access to HE
with 45 passes

Equivalent level 3 qualifications worth 64 UCAS points supported by substantial relevant work experience

Level 3 qualifications must include Maths &/or Physical Science

GCSE
Jersey Progression Diploma: Min. 2 x Merit Grades with GCSE English & Maths at grade C or 4 or higher

Progression route from Highlands 6th Form College
Level 3 Apprenticeship in Building Services or BTEC National in Construction

For international students:
IELTS score of 6.0 or Cambridge Proficiency or Advanced Grade C.

Where can I go from here?

Successful students will be able to progress onto the BEng (Hons) Civil Engineering degree.

Access to Higher Education: Diploma in Humanities or Science

Pre-degree course 1 year | Full time

Why choose this course?

- Enables students who are over 19 years of age, who have **not** previously gained a Level 3 qualification (A level or equivalent), to study towards a degree
- For students aged 24 years, or over, who wish to return to study at higher education level, to update their knowledge and prepare for degree level study
- Designed for students without the necessary requirements for degree-level study
- Prepares students for higher-level study in their chosen career path

What will I learn?

This programme is an intensive 1 year course, which is both challenging and thorough.

Access to HE with Diploma in Humanities

This is recognised as a Critical Skills course by the Department of Social Security. If you can demonstrate your intention and are a suitable applicant for a career in **Social Work** you can continue to receive income support and housing benefit payments while you are studying.

Course Fees

There is a subscription and examination fee payable for this course by all students of £125. For students wishing to study this course to improve their existing Level 3 qualifications the full course fee of £3,125 is payable.

This course is **NOT** eligible for a student finance grant. The college offers a part-payment plan to spread the cost of the course.

Access to HE with Diploma in Science

This is recognised as a Critical Skills course by the Department of Social Security. If you can demonstrate your intention and are a suitable applicant for a career in **Nursing** or Social Work you can continue to receive income support and housing benefit payments while you are studying.

How do I qualify?

Interview

- Demonstrate the potential to study at Level 3 (A level)
- A desire to progress to higher education
- A clear understanding of how to achieve their HE goals, including routes to university
- You must be aged 19 or over and not studied at Level 3 before

If you are aged 24 or over you must demonstrate your intention to apply for a course in higher education.



Entry requirements

GCSE

For the Diploma in Science pathway you must have a minimum grade C or 4 in English Language, Maths & Science **before** you apply for the course

For the Diploma in Humanities you must have a minimum grade C or 4 in English Language & Maths **before** you apply for the course

Where can I go from here?

Students have progressed onto degree courses at UCJ and humanities and sciences degrees at a number of UK universities. The Access course offers a sound preparation for degree-level study through a range of teaching, learning and assessment strategies.

Progression route from Highlands College

BA (Hons) Social Work, FdSc in Psychology with Criminology or FdA in Childcare.

Business & Management

University of Plymouth Foundation Degree (FdA)

2 years | Full time

Leading to: Business & Management | University of Plymouth
BA (Hons) Degree | 1 year | Full time

Why choose this course?

- Prepares you for a fulfilling career at management level in a wide range of industries
- Exciting work placement opportunities in a range of industries including retail, hospitality, financial services and public sector
- Develop your professional network through dedicated work experience
- Higher potential for job opportunities offers on completion

What will I learn?

From the rudiments of business accounting to strategic decision-making, students on this programme experience the full diet of business skills. Modules align with the professional work placements and are fully supported by a dedicated mentor and personal tutor, encouraging students to apply and reflect on knowledge acquired in the classroom whilst in the work context.

Course Fees

The fee for this course is £7,900 per year.

You can apply to Student Finance to have your fees paid.

Year 1 (FdA)

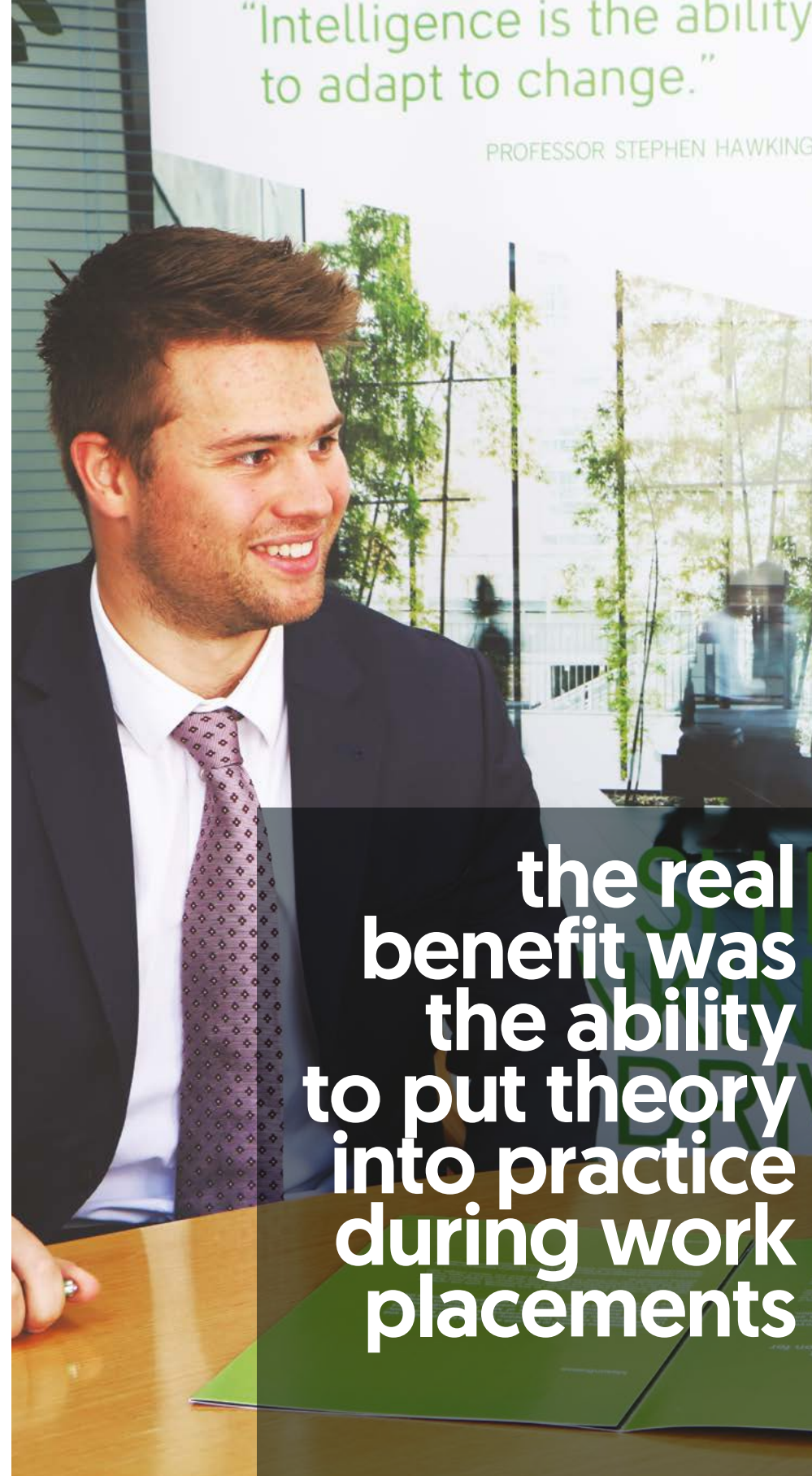
- Business law and financial services regulation
- Business relationship and customer service management
- Business information systems
- Business accounting

Year 2 (FdA)

- Macro and Micro economics
- People and organisations
- Research, analysis and decision-making
- Operations and process management
- Marketing
- Human Resource Management

Year 3 (BA Hons)

- Honours project or Consultancy project
- Innovation and Enterprise
- Business ethics and corporate governance
- Leading people and managing change
- Corporate Strategy



Entry requirements

UCAS
Minimum of 64 UCAS points

BTEC
Level 3 - Minimum of 2 Merits

A level
Two at grade C or above

Access to HE
Comparable grade profile

GCSE
Min. 5 GCSEs grade C or 4, including Maths & English

Jersey Progression Diploma
Min. 2 x Merit Grades with GCSE English & Maths at grade C or 4 or higher

Complete a written task
Pass interview

Where can I go from here?

Students have been recruited into a range of trainee positions in Trust, Banking, Investment Management, Retail and HR. Starting salaries average around £25-30K, and most students have a firm job offer in hand before graduation.

Progression route from Highlands 6th Form College

OCR Cambridge Technical Diploma in Business (Level 3)

64 UCAS points with GCSE English & Maths at grade C or 4 or higher.

Success Stories

I decided to study the degree structure as learning in class is very different from learning in a practical environment. UCJ combines class study with work placements which was extremely beneficial to my development and career.

Work placements give you the opportunity to sell yourself to your chosen organisations. I found a natural enjoyment and passion for HR and decided to pursue this as a career. I wouldn't have had this opportunity without the work placements. Studying with UCJ improved my confidence and skills, gave me opportunities to network in Jersey and ultimately resulted in me finding my current job and a career I love.

Emma Pannenberg
UCJ Graduate & HR Executive, Sanne Group

Employer Partners

MasonBrees
Affinity Private Wealth
Appleby Global Group Services Limited
Ashburton Investments
Citi International Bank
Deutsche Bank International Limited
BDO Greenlight
HSBC Bank International Limited
Intertrust
Investec Trust (Jersey) Limited
IPES Jersey
JFSC
Langham Hall
Mourant Ozannes
Ogier
RBC
Sanne Group
Santander Private Banking
State Street Bank and Trust Company
States of Jersey
UBS
Waitrose

Proud to be
part of



Home-grown talent.

Over the past decade, over 3,000 young Islanders found their first job in finance.



Jersey Finance

www.jerseyfinance.je/careers



**work
placements
give you the
opportunity
to sell
yourself to
your chosen
organisations**

Emma Pannenberg
UCJ Graduate & HR Executive
Sanne

Childhood Studies

University of Plymouth Foundation Degree (FdA)

2 Years | Full time • 4 Years | Part Time

Leading to: Childhood studies | University of Plymouth BA (Hons) Degree (Top up) | 1 year Full time | 2 years Part time

Why choose this course?

- Receive an in-depth understanding of childhood studies from birth to 16 years
- Increase your knowledge, creativity and advocacy for young children and their families
- Option to study a third year BA (Hons) top-up year at UCJ or Plymouth University, or another relevant Higher Education Institution
- Exciting work placements provide key experience to increase your skills and employability

What will I learn?

Modules are designed to equip you to support children of all ages, with emphasis on the critical early years. Explore all areas of child development, build your skills in planning, carry out observations and research methodologies. You will also attend Professional Development sessions and create a portfolio to evidence your learning. Weekly work-placements are fully supported by a dedicated coach and personal tutor, encouraging you to apply and reflect on knowledge acquired in the classroom. You can achieve a 'Licence to Practice', allowing you to work with children in Jersey on completion of your work placement.

Course Fees

The fee for this course is £7,900 per year full time and £3,950 per year part time.

You can apply to Student Finance to have your fees paid.

Year 1 (FdA)

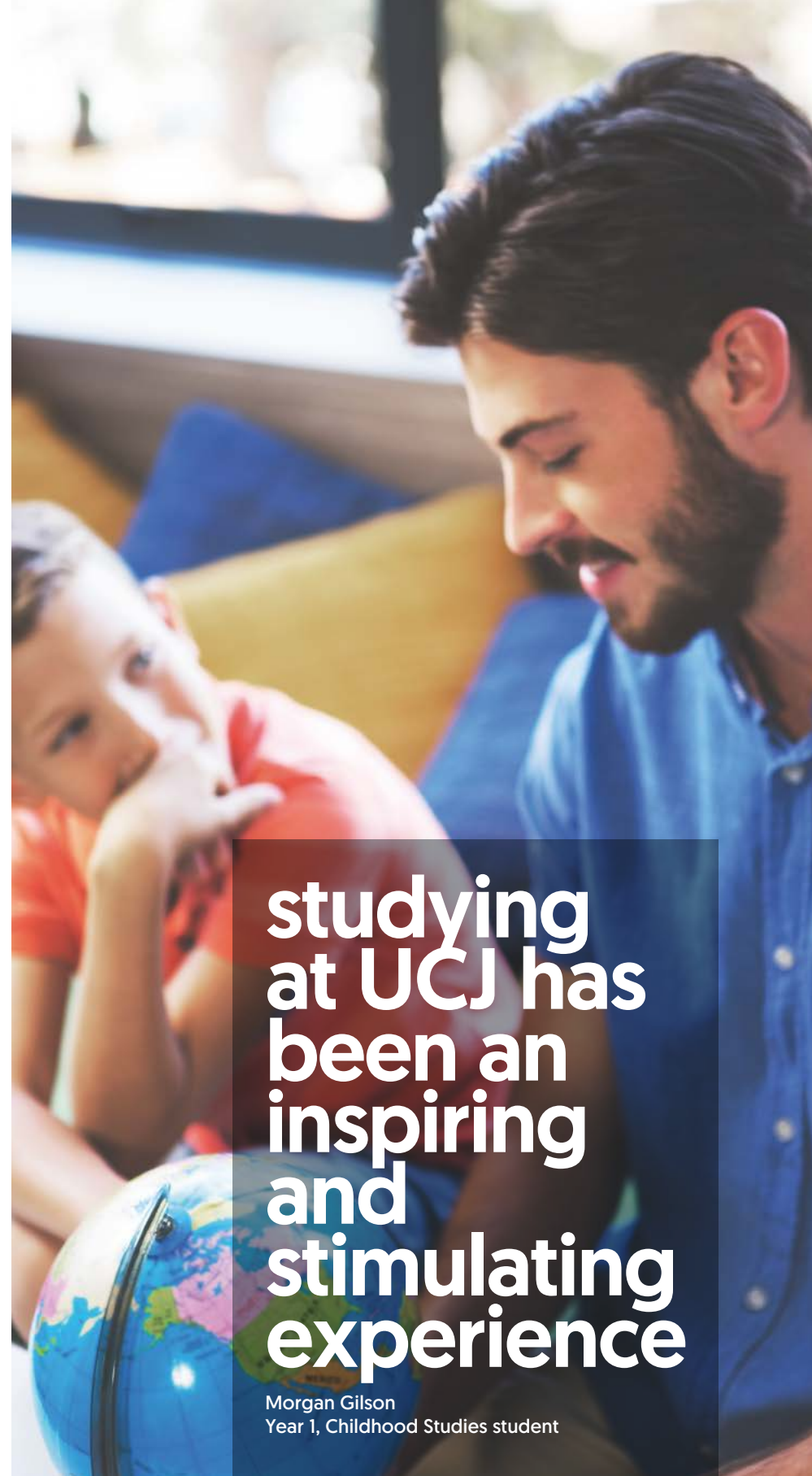
- Professional development
- Include me – Perspectives on disability
- Children's rights and welfare
- Today's child
- Understanding children's learning and development
- Provision for children

Year 2 (FdA)

- Children in society
- Physical movement in the lives of children
- Children's workforce – Management and leadership
- Child development is for the future adult
- Who am I?
- Multi-agency working and the impact on children

Third year top-up BA (Hons)

- Honours project
- Consultancy in childcare
- Curriculum, planning and assessment
- Key issues in childhood and youth studies
- Strategic, operational and multi-agency management



studying
at UCJ has
been an
inspiring
and
stimulating
experience

Morgan Gilson
Year 1, Childhood Studies student

Entry requirements

UCAS
Minimum of 64 UCAS points

BTEC
Level 3 - Minimum
2 Merits

A level
2 at grade C or above

CACHE
Level 3 - Minimum Merit

Baccalaureate
24 International points

Access to HE
Comparable grade
profile

GCSE
Min. 5 GCSEs grade C
or 4, including Maths
& English

**Jersey Progression
Diploma**
Min. 2 x Merit Grades
with GCSE English &
Maths at grade C or
4 or higher

Successful interview
All candidates must
undergo an enhanced
DBS check for their
work placement.
Mature applicants will
be considered on an
individual basis.



Placements with us expose students to a variety of experiences, including shadowing our specialist support workers

Fiona Vacher, Executive Director
for Jersey Childcare Trust

Where can I go from here?

Students go on to a range of positions in the childcare industry, including management in the private sector, Family Nursing, Education and Day Care Registration. Many also continue studying for PGCE courses in the UK to become Primary Teachers.

Employer Partners

Jersey Childcare Trust
Jersey Youth Service
Avranches Day Nursery
Centre Point Trust Day Nursery
Charley Farley's Day Nursery
Le Petit Ecole Day Nursery
Leeward Day Nursery
Little Oaks Day Nursery
Nestling Day Care Nursery
Organic Kids
Rainbow Tots Day Nursery
Sunnyside Day Nursery
Westmount Day Nursery
Bethesda
Communicate Pre-School
Duck Pond Pre-school
Silverstar Pre-school
The Kids Club
States of Jersey Primary Schools

NEW FOR 2019 SUBJECT TO APPROVAL

Computing

Pearson/BTEC Higher National Diploma (HND)

2 Years | Full time

Why choose this course?

The course aims to widen access to higher education and enhance career prospects.

On successful completion of the Level 5 Higher National Diploma, students can develop their careers in the computing sector through:

- Entering employment;
 - Continuing existing employment;
 - Gaining vendor certification (eg CopTIA, CISCO, Microsoft, Oracle);
 - Committing to Continuing Professional Development (CPD); or
 - Progressing to university.
- Well trained and well paid technology technicians at level 4 or 5 are in high demand right across Jersey and the course will give you the qualifications you need to succeed at this level.

A qualification that will also fast-track you to an Honours degree at a range of UK universities. UCJ is developing its own top-up BSc degree in Computing for September 2021.

What will I learn?

You will become equipped with computing skills, knowledge and the understanding necessary to achieve

high performance in the global computing environment.

You will acquire a thorough grounding in computing principles at Level 4 that leads you to a range of specialist progression pathways at Level 5.

Course Fees

The fee for this course is £7,900 per year.

You can apply to Student Finance to have your fees paid.

Year 1 (HNC)

Six Core Mandatory units covering

- Programming
- Networking
- Professional Practice
- Database Design & Development
- Security
- Managing a Successful Computing Project

Two Option units which are likely to cover

- Software Development Lifecycles
- Website Design & Development

Year 2 (HND)

Two Core Mandatory units covering

- Computing Research Project
- Business Intelligence

Five Option units which are likely to cover

- Network Management
- Application Development
- Systems Analysis & Design
- Games Development
- Data Structures & Algorithms



Entry requirements

UCAS

Minimum of 64 UCAS points

BTEC

National Extended Diploma MPP

A level

Minimum DDE

GCSE

5 GCSEs A-C (grade 4 or above including English & Maths)

Jersey Progression Diploma in IT

Min. 2 x Merit Grades with GCSE English & Maths at grade C or 4 or higher

Where can I go from here?

Students enter roles in IT strategy and support in business across a range of sectors, from financial services to consulting. Students can progress to a top-up year at UCJ or partner institution for a full BSc (Hons) degree.

Highlands College 6th Form Progression Routes

BTEC Level 3 Extended Diploma in IT (Minimum MPP).

the
work
placement
was a
great way
to begin
building
a career

FdSc IT for Business Graduate

Success Stories

By 25, I'd completed the Level 3 BTEC Extended Diploma in IT and loved every minute of it, so when I was told about the IT for Business degree and that it was available here on-island, I was extremely interested. What really swayed it for me was the Work Placement element as it would be a great way to see exactly what was on offer and hopefully build a career from it. I'm very proud to have found my specialism and career all at the same time. I joined C5 Alliance in 2014 on a Work Placement and have never looked back. Currently, I am a Consultant in the Technical Solutions Team. I really can't thank the UCJ staff and my employer enough for their patience and guidance which helped me forge the path to where I am today!

**Richie Shuster, IT for Business Graduate
Consultant for C5 Alliance, Jersey**

Employer Partners

MasonBreese
The Royal Bank of Scotland
International Limited
Calligo Limited
Altus Consulting (CI Limited)
Logicalis Jersey Limited
State Street Bank and Trust Company
Specsavers
UBS
Chief Minister's Information Services
JT Global

Construction

LSBU Higher National Certificate
[licenced from Pearson/BTEC]

2 years | Part time

Leading to: BSc (Hons) Construction Management | 2 years | Part time

Why choose this course?

- If you work in the construction industry and are seeking to further your career
- Gain an industry-recognised qualification
- Prepares you to progress to Construction Management, Surveying & Architectural Technology degree disciplines
- Develops your knowledge and skills to fulfil a range of technical and managerial work in the sector
- Prepares you for promotion and new career opportunities
- Increase your employability through the vocational approach to teaching

What will I learn?

You will learn about construction technology and materials, the legal and economic context, building services and environmental science, construction technology and structures, surveying and setting out, architectural design and technology and building pathology. You will also complete a project and be supported in classes that will help develop your academic skills for this level of study. With emphasis on managerial training, you will develop your ability to tackle and take responsibility for projects throughout the construction industry.

In partnership with



Progression

This course leads onto the BSc (Hons) Construction Management. For details see below.

Course Fees

The fee for this course is £3,995 per year.

You can apply to Student Finance to have your fees paid.

Year 1

- Supporting Studies
- Construction Technology & Materials (A-level & Craft entrants)
- Building Pathology
- Project (BTEC Diploma entrants)
- Legal & Economic Context in the Built Environment

Year 2

- Construction Technology 2 & Structures
- Building Services & Environmental Science
- Surveying & Setting Out



the
support
I receive
at the
college is
excellent

Year 1 Construction Diploma student

Entry requirements

UCAS
Minimum of 64 UCAS points

BTEC
National Diploma MPP

A level
Minimum DDE

Baccalaureate
24 International points

Access to HE
15 Merits and 30 Passes or Level 3 qualification equivalent including Science

GCSE
5 GCSEs A-C (grade 4 or above) including English & Maths

Jersey Progression Diploma
Min. 2 x Merit Grades with GCSE English & Maths at grade C or 4 or higher

We welcome applications with significant relevant industrial experience.

Progression route from Highlands 6th Form College

National Diploma in Construction or Level 3 Apprenticeship in Building Services or Trades.

**an excellent
course that
leads you to
progress to
an exciting
career in the
construction
industry**

Tony Bechelet
Programme Leader

Where can I go from here?

The programme covers a range of construction industry pathways, including Project Management, Quantity Surveying, Structural Engineering and Construction Work. Many graduates progress onto the BSc (Hons) in Construction Management, either directly or after a study break. Studying Construction Management would be a useful route for various Surveying disciplines and provide strong career enhancement for more senior positions within the industry.

Construction

LSBU BSc (Hons) Construction Management

2 years | Part time

Why choose this degree?

- Qualify in an industry that's in high-demand for professionals
- Professionally accredited by the Chartered Institute of Building (CIOB)
- Develop skills to lead multi-disciplinary project teams
- Gain up-to-date knowledge of legislation and regulations
- Develop the ability to deliver in complex project environments

What will I learn?

The course provides you with a breadth of technical and managerial expertise in construction, preparing you to face exciting and demanding challenges within the industry. It offers the opportunity to use modern equipment within a well-resourced environment.

The knowledge gained enables you to have the confidence to work with other professionals in this exciting, fast-paced and competitive industry. Construction Management can be a fantastic career for those who love buildings, working with people and want to work in a professional capacity. This course will prepare you for a career in a range of fields within the building environment, including Project Management, Contracting, Consultancy

and Residential building. The course will enable you to develop a wide range of employability skills through the emphasis on a vocational approach to teaching.

Course Fees

The fee for this course is £4,625 per year. There is an additional cost of £350 to cover costs for a residential at LSBU in London.

You can apply to Student Finance to have your fees paid.

Year 1

- Production Management
- Construction Contract Law
- Measurement 1 & Documentation
- Construction Planning
- Estimating & Tendering Process
- Management of Organisation

Year 2

- Research Project Module
- Contract Administration (Non QS)
- Sustainable Construction & the Environment
- Construction Management Project
- Project Management
- Corporate Management & Finance

Entry requirements

HNC in Construction
Merit grade

Progression route from UCJ

HNC in Construction

Successful Interview

You should preferably be working in an appropriate area of the construction industry. You will need the approval and support of your employer to release you from work for the block weeks and evening classes.

In partnership with



my hard
work was
recognised
by LSBU by
securing a
scholarship
from the
Chartered
Institute of
Building

Nathan Clothier
UCJ Graduate

Where can I go from here?

The course leads on to careers at a higher level within the construction industry. Graduates enter fulfilling careers in the local and international construction industry. You can further your studies with a MSc Construction Project Management off-island, or seek to gain professional membership of the Chartered Institute of Building.

Success Stories

Whilst living and working in Jersey with a young family I decided to add to my existing qualifications. This part time course gave me the ability to learn and further my career, whilst continuing to work full time. It was hard work but worth it. I'm now taking it one step further by applying for professional Chartered status with the Chartered Institute of Building. During the course my hard work was also recognised by London South Bank University by securing a scholarship from the Chartered Institute of Building and a top award from the Worshipful Company of Constructors.

Nathan Clothier
BSc (Hons) Construction Management
Graduate: First Class Honours

Diploma in Art and Design (UAL)

Foundation Studies [Level 3/4] Pre-degree course

1 year | Full time

Why choose this course?

This one-year, Level 3 (A level equivalent) course is designed for students who wish to further their study of Art & Design at university, or who are aiming for a career in the creative industries. It is mainly aimed at learners who wish to further their studies but may not have had the opportunity to develop the necessary skills.

An exciting and practical full time programme which allows students to explore a wide range of media and techniques, the flexible design of the course makes it a favourite with mature students and school-leavers alike. All of the tutors on the programme are professional artists and designers and students have the opportunity to visit galleries and museums both on-island and in the UK.

Course Fees

There is a subscription and examination fee payable for this course by all students of £125. For students who are 19 or over without a clear intention of progressing to a Degree in an Art and Design subject off-island, the full course fee of £3,125 is payable. This course is NOT currently eligible for a student finance grant on-island but is for students wishing to studying for it in the UK. The college offers a part-payment plan to spread the cost of the course.

In partnership with

ual: awarding body

What will I learn?

This course gives a strong grounding in a range of creative skills and disciplines, including, but not limited to: drawing, painting, printmaking, photography, ceramics, 3D design, textiles, fashion and sculpture. Students will gain a clearer understanding of their potential area of specialism prior to degree level study. Learning takes place in the creative surroundings of our art studios, where artists work side-by-side and are able to comment on and critique each other's work.

The course comprises seven units

Learning skills and context (Level 3)

Unit 1: Art and design research methods

Unit 2: Art and design ideas development

Unit 3: Art and design materials and methods

Unit 4: Art and design evaluation and reflection

Development and progression (Level 3 or 4)

Unit 5: Integrated art and design research ideas and methods

Unit 6: Preparation for progression in art and design

Proposal and realisation (Level 4)

Unit 7: Project proposal and realisation in art and design



students
work
alongside
practicing
artists who
are able to
support,
comment
and critique
their work

Sarah Jordan
Programme Leader

Entry requirements

BTEC/OCR/UAL
Merit equivalent to Art A level

A level
One A level in Art or related creative subject

Successful Interview

Applicants must be 18 or over

Present a suitable portfolio of art and design work

Provide references

Mature students or those with alternative qualifications or experience will be considered on an individual basis.

Where can I go from here?

Students go on to study at degree level in Art & Design subjects or related fields, or move into employment within a wide range of creative industries including graphic design, curation, fashion and textiles and creative design.

Psychology with Criminology

University of Plymouth Foundation Degree [FdSc]

2 years | Full time • 4 years | Part time

Leading to: Social Science | University of Plymouth BSc (Hons) Degree
1 year Full time | 2 years Part time

Why choose this course?

- If you wish to pursue a career as a practicing Psychologist, Psychotherapist, Criminologist, researcher or in a range of related professional disciplines
- Developed in partnership with the School of Psychology and the School of Law, Criminology and Government at Plymouth University
- Gain a strong suite of transferable skills and experience to increase employability in chosen area
- Progress to a final year of relevant BSc (Hons) subject with Plymouth University upon successful completion

What will I learn?

Designed with the professional support of police and probation services to provide strong local and vocational relevance, this course offers a rigorous discipline of core skills development, particularly in research methods with 60% focus on Psychology and 40% on Criminology. The course offers a full understanding of theoretical and applied issues that form contemporary debate. Modules cover all key areas of Psychology, with Criminology focusing on the causes of criminal behaviour and the treatment of offenders within England & Wales and local criminal

justice systems. You will learn what is known and not known, and come to appreciate how our present understanding of people and their behaviour is based on an empirical tradition that emphasises the dispassionate search for truth and its application.

Course Fees

The fee for this course is £7,900 per year full time and £3,950 per year part time.

You can apply to Student Finance to have your fees paid.

Year 1

- The Psychology of Individual Differences
- Developmental Psychology
- Applied Criminology 1
- Research Methods in the Social Sciences
- Social Psychology Theory and Practice
- Criminology and the Problem of Crime

Year 2

- The Psychology of Abnormal Behaviour
- Applied Criminology 2
- Cognitive and Biological Psychology
- Research Methods
- Criminology and Penology
- Work-based Learning



Entry requirements

UCAS
Minimum of 64 UCAS points

BTEC
Level 3 - Minimum of 2 Merits

A level
Two at grade C or above

Access to HE
Comparable grade profile

GCSE
Min. 5 GCSEs grade C or 4, including Maths & English

Jersey Progression Diploma
Min. 2 x Merit Grades with GCSE English & Maths at grade C or 4 or higher

Complete a written task
Pass interview.

I'm
enjoying
the wide
range of
skills I'm
picking up
on my work
placement -
it's proving
a vital
learning
experience

Sophie Johnson-Mills, Year 2 Student on work
placement with Jersey Probation Service



Where can I go from here?

Students can progress to BSc (Hons) Social Sciences [see page 54 for details] at UCJ, or BSc (Hons) Psychological Studies at Plymouth University.

Studying psychology gives you a broad range of skills that span both science and the arts and opens up opportunities with a wide variety of employers. Professions include clinical or counselling psychologist; educational psychologist, health or occupational psychologist, sport and exercise psychologist. A criminology graduate with critical thinking, analytical and communications skills, is attractive to employers inside and outside the criminal justice sector. Careers in criminology include Community Development worker, Police officer, Prison officer, Probation officer, Social worker and Youth worker.

Employer Partners

Andium Housing Trust
Bel Royal School
Building a Safer Society (BASS)
States of Jersey
Inclusion Project Youth Service
Jersey Drug and Alcohol Service
Jersey Probation Service
Mind Jersey
Mont A L'Abbe School
Samares School
Silkworth Charity Group
Springfield Primary School
States Greffe
States of Jersey Police
The Prince's Trust

Social Sciences

University of Plymouth BSc (Hons) Degree (Top-Up)

1 Year | Full time • 2 Year | Part Time

Why choose this degree?

- You're interested in the study of people in society and how they relate to each other
- Offers work experience to gain key skills and increase employability in key sectors
- Prepares you for further study in specialist areas such as social work, teaching etc.

What will I learn?

This course includes Sociology, Social History, Social Psychology, Globalisation, Criminology and Research methods which give you skills to undertake your own research in the final year of the course. It teaches a broad overview of how society is built, theories and perspectives that show how individuals relate to each other and institutions. The degree has been written to reflect the special features of Jersey's society and students have the opportunity to engage in work placements and undertake research for a local organisation.

Course Fees

The fee for this course is £7,900 per year full time and £3,950 per year part time.

You can apply to Student Finance to have your fees paid.

1 Year Full time or 2 Years Part time

- Social Sciences Dissertation
- Work Based Action Research
- Issues for a United Europe in the 21st Century
- Immigration, Race & Labour
- Contemporary Social Issues: Policing the Private Sphere



Entry requirements

Foundation degree or
HND in a relevant subject
Merit or Distinction grade

Progression route from UCJ

FdSc in Psychology
with Criminology.

students benefit from 1:1 dissertation supervision and high-levels of individual tutor support

Mary Ayling-Philip
Programme Leader

Success Stories

I chose Social Sciences because it's broad and versatile, as I didn't want to restrict myself to one field of career choice. I gained a first class in my dissertation and as a whole, found the degree interesting and am delighted I achieved a 2:1.

Georgina Singleton, UCJ Graduate

This degree allowed me to continue my part time job whilst I explored what direction I wanted to take as a career. Studying a degree on such a smaller scale allowed for a greater relationship with the tutors where a degree abroad would not be possible. I achieved a first class in my dissertation about brand advertising on social media. I'm thrilled that I graduated with a 2:1 (Hons) and would highly recommend it to anyone interested in this area.

Luke Aubin, UCJ Graduate

Employer Partners

Andium Housing Trust
Bel Royal School
Building a Safer Society (BASS)
States of Jersey
EY
Inclusion Project Youth Service
Jersey Drug and Alcohol Service
JEC
Jersey Probation Service
Mind Jersey
Mont A L'Abbe School
Samares School
Silkworth Charity Group
Sports Bug
Springfield Primary School
States Greffe
States of Jersey Police
St Brelade's College
The Prince's Trust

Social Work

University of Sussex BA [Hons] Degree

3 years | Full time

Why choose this course?

- This is the recognised route to becoming a Social Worker.
- You will receive the best training possible to become a Social Worker co-taught by a world class research university
- This course forms part of the Government of Jersey's commitment to improving the support for children, families, young people and vulnerable adults in our community
- The course combines theory with practical experience, giving you a qualification that can change people's lives

What will I learn?

You will learn about contemporary social work practice and the factors that influence the development of the profession. You will consider the political and controversial aspects of the social work role, and learn from practitioners working in the profession. You also meet service users and carers. You will look at the key theories of human development and explore issues relating to individual and family disadvantage and the impact of inequality. You will gain an understanding of the legal framework surrounding social work practice and the relationship between the law and social work values.

Course Fees

The fee for this course is £9,250 per year.

You can apply to Student Finance to have your fees paid.

Year 1

- Contexts of Social Work
- Introduction to Professional Learning and Development
- Human Growth and Development
- Law for Social Work
- Values, Ethics and Theories: preparing for complexity in Social Work Practice

Year 2

- Social Work with Adults, their families and carers
- Social Work with Children, Young People and Families
- Learning Practice Placement 1 (70 days)

Year 3

- Group Reflection on Practice 1
- Understanding Organisations, Management and Interprofessional Practice
- Research Minded Project
- Learning Practice Placement 2 (100 days)
- Group Reflection on Practice 2



Entry requirements

International Baccalaureate

Typical offer: 30-23 points from the full IB Diploma

BTEC

National Extended Diploma Typical Offer: DDM

A level

Typical Offer: ABB - BBB

Access to HE

Typical offer: Pass with 45 Level 3 credits at Merit or above of which 21 - 24 credits must be at Distinction

GCSE

5 GCSEs A-C (grade 4 or above) including English & Maths

Jersey Progression

Diploma in Health and Social Care or Childcare

Min. 2 x Merit Grades with GCSE English & Maths at grade C or 4 or higher

In addition to qualifications

Attendance at interview to demonstrate your potential to become a Social Worker

An enhanced DBS check

Highlands College 6th Form Progression Routes

BTEC Level 3 Extended Diploma in Health & Social Care [DDM profile] Access to HE in Humanities or Science [Pass with 45 level 3 credits at Merit or above of which 21 - 24 credits must be at Distinction].

Sport

Pearson/BTEC Higher National Diploma (HND)

2 years | Full time

Why choose this course?

- To achieve high performance in the global Sport & Exercise Science environment
- It will provide you with the education in Sport & Exercise, including Exercise Referral Instructor, Advanced Coaching, Sports Performance and Adventure and Leisure Management
- To better understand the diversity of roles within Sport & Exercise, recognising the importance of collaboration at all levels
- To have the opportunities to enter or progress in employment in Sport & Exercise, or progress to higher education qualifications such as an Honours degree in Sport & Exercise or a related area
- You will be able to address contemporary issues facing the industry, with particular emphasis on sustainability and the environment
- It will provide you with the context in which to consider professional ethics and their relation to personal, professional and statutory responsibilities within the industry

What will I learn?

The course will provide you with a thorough grounding in Sport & Exercise principles relating to individual professions within the Sport & Exercise Science sector. It will equip you with commercial acumen, understanding and Sport & Exercise Science skills

for success in a range of roles in the sector. It will provide you with sufficient knowledge, skills and understanding at levels 4 and 5 to enable you to progress to a top-up degree.

Course Fees

The fee for this course is £7,900 per year.

You can apply to Student Finance to have your fees paid.

Year 1 (HNC)

Three Core Mandatory units covering:

- Physical activity, lifestyle and health
- The Sport Landscape
- Project management

Five Option units which are likely to cover:

- Outdoor Learning
- Nutrition
- Anatomy & Physiology
- Activity leadership
- Work Exposure

Year 2 (HND)

Two Core Mandatory units covering:

- Research Project
- Entrepreneurism in Sport

Five Option Units which are likely to cover:

- Leisure management & leadership
- Physical literacy
- Work experience
- Understanding & evaluating initiatives
- Teaching practice



Entry requirements

UCAS

Minimum of 64 UCAS points

BTEC

National Extended Diploma MPP

A level

Minimum DDE

GCSE

5 GCSEs A-C (grade 4 or above including English & Maths)

Jersey Progression

Diploma in Sport

Min. 2 x Merit Grades with GCSE English & Maths at grade C or 4 or higher

Highlands College 6th Form Progression Route

BTEC Level 3 Extended Diploma in Sport (Minimum MPP).

Human Resource Management

London South Bank University Master's Degree (MSc)

3 years | Part time

Why choose this degree?

- For HR Professionals looking to raise skills and qualifications in management roles
- Part-time so you can study whilst you work
- Enhance career progression and opportunities to Senior/Director levels
- Pathway to become CIPD Chartered

What will I learn?

The course is structured as 2 years, part-time, delivered in blocks of 2x2 days per module supported by online learning and teaching. The 3rd year consists of 9 months of dissertation through research and methodology.

Course Fees

The fee for this course is £15,000 for the whole programme and is delivered by lecturers from LSBU on island and by distance learning.

Year 1

- Leadership and management skills
- Leadership and HR strategy
- Power and Constraint: The strategic context
- Resourcing and talent management

Year 2

- Research Methods for HR
- Managing the employment relationship
- Managing reward
- Learning and talent development

Year 3

- Dissertation [Masters]

Entry requirements

Degree

A first degree, min 2.2

Work experience

At least two years post-graduate work experience in an HRM or HR related role, e.g. recruitment, compensation and benefits, organisational development, consultancy.

Consideration will also be given to applicants who are working in general management and have significant people management responsibilities.

Non-Standard Entry

Where there is a minimum of two years HR experience but no undergraduate qualification degree.

Applicants must complete a 1.5k-2k word report on an organisational HR issue, provide an extended personal statement and supply two supporting references confirming suitability for entry to a postgraduate programme.



In partnership with



**this course
allows you
to enhance
your leadership
& management
skills & work
towards
becoming
CIPD
Chartered**

Heather Davies
Director of Enterprise and Professional Studies

Where can I go from here?

CIPD Membership - The programme aims and objectives are constructed in line with the CIPD Level 7 advanced professional standards and provide knowledge required for a professional level of CIPD Membership. On successful completion, students automatically achieve Associate Membership of the CIPD and depending on the level of experience, can apply for Chartered CIPD membership.



Offering you free career advice every step of the way...

Free career advice and App for sixth-formers and school leavers.

As an established leader in graduate and school leaver recruitment, 1st Recruitment offers an unparalleled blend of experience, guidance, and client contacts to assist recent graduates and school leavers in finding their perfect entry-level or trainee role within the Channel Islands offshore financial services industry and the Civil Service.

We place graduates and school leavers into leading offshore financial services organisations operating across a wide range of sectors including: Accountancy, Law, Trust and Fiduciary, Funds, Banking, Compliance, Finance, Investments, Human Resources, Project Management, IT, and many more besides.

What to expect

Our consultants offer objective, confidential careers guidance based on your individual needs. This guidance can include (but is not limited to):

- Feedback on CV
- Helping you to explore career paths
- Latest graduate and entry level opportunities
- Discussing further study options
- Providing sector specific information
- Advice on interview preparation and techniques

Why not undertake a temporary or contract role in your gap year?

Come and speak to 1st Recruitment to find out the latest opportunities or just simply download our free App!

All the latest trainee and temporary roles at your finger tips!

Call: (01534) 875444
Email: jobs@1strecruit.co.uk



www.1strecruit.co.uk



10 % off

When you spend £50 in store voucher valid in Jack Wills, Jersey only.

5 King Street | T 01534 626023
www.sandpiper.ci [@jackwillsci](https://www.facebook.com/jackwillsci) [@jackwillsci](https://www.instagram.com/jackwillsci)

Terms & Conditions: This voucher entitles students to 10% discount on any full priced items from Jack Wills Jersey. One voucher per transaction/purchase. Student must have valid ID for local school/authority. Not to be used in conjunction with any other promotion. Discount only valid with the production of this Highlands College voucher - no photocopies/reprints will be accepted. Valid until 16/09/19.

JACK WILLS

10 % off

Full price items at Moss Bros Jersey only.

Liberty Wharf | T 01534 747330
www.sandpiper.ci [@mossbrosci](https://www.facebook.com/mossbrosci)

Terms & Conditions: This voucher entitles students to 10% discount on any full priced items from Moss Bros Jersey. One voucher per transaction/purchase. Student must have valid ID for local school/authority. Not to be used in conjunction with any other promotion. Discount only valid with the production of this Highlands College voucher - no photocopies/reprints will be accepted. Valid until 16/09/19.

EST. 1851
MOSS BROS.
BESPOKE | READY-TO-WEAR | HIRE

New term essentials.

Students get 2% discount on Mac with iQ.

10-14 Beresford Street | T 01534 769320
www.iQJersey.com [iQJersey](https://www.facebook.com/iQJersey) [iQJersey](https://www.instagram.com/iQJersey) [iQJersey](https://www.youtube.com/iQJersey)



Terms & Conditions: This voucher entitles students to 2% discount on your new Mac with iQ - Jersey's Apple Premium Reseller. One voucher per transaction/purchase. Student must have valid ID for local school/authority. Not to be used in conjunction with any other promotion. Discount only valid with the production of this Highlands College voucher - no photocopies/reprints will be accepted. Valid until 16/09/19.

On your marks,
get set,
grow.



Proud supporters of our community.

At Ravenscroft we encourage growth and progression within our team and we are strong believers that our responsibility to nurture potential extends to the wider community. We provide the same level of commitment

and support to talented young local athletes and community projects as we do to our own staff.

We believe those that aim higher...

achieve greater.



Jersey: +44 (0)1534 722051 Guernsey: +44 (0)1481 729100

www.ravenscroftgroup.com

Ravenscroft is a trading name of Ravenscroft Limited ("RL") (company number 42906) and Ravenscroft Investment Management Limited ("RIML") (company number 49397) both of which have their registered office addresses at PO Box 222, Level 5, The Market Buildings, Fountain Street, St Peter Port, Guernsey, GY1 4JG. The business address for Ravenscroft Limited's Jersey office is PO Box 419, First Floor, Weighbridge House, Liberation Square, St Helier, Jersey JE2 3NA. RL is licensed and regulated by the Guernsey Financial Services Commission to conduct investment business and the Jersey Financial Services Commission

to conduct investment and funds services business. Ravenscroft Investment Management is a trading name of RIML. RIML is licensed and regulated by the Guernsey Financial Services Commission to conduct investment business. BullionRock is the trading name of Ravenscroft Precious Metals Limited ("RPML") (company number 54550) which has its registered office address at PO Box 222, Level 5, The Market Buildings, Fountain Street, St Peter Port, Guernsey, GY1 4JG. RPML is registered with the Guernsey Financial Services Commission as a Non-Regulated Financial Services Business.